

# PEN TYPE ELECTROMAGNETIC ULTRASONIC THICKNESS GAGE

COUPLING AGENT IS NOT REQUIRED

MEASUREMENT THROUGH COATING AND RUST LAYER

WORK AT MAXIMUM 600°C

WITH A AND B SCAN

- Measurement without ultrasonic coupling agent, for workpieces with surface temperatures less than 600°C (depending on the probes)
- Compact size, easy to carry, comes with waveform display and full-function keyboard, easy to adjust the measurement parameters
- Non-contact measurement of rough, corroded surfaces without sanding
- Storage of 10000 data and 100 files
- Highly intelligent functions such as alarm for exceeding upper and lower limits, automatic zero calibration, automatic identification of probes, etc
- Automatic power off
- Suitable for inspection of workpieces of various shapes, such as pipes, small tubes, elbows, etc



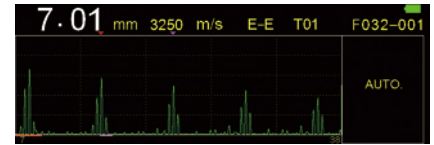
normal temperature probe(included)



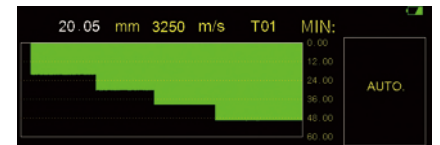
high temperature probe (optional)



calibration block (included)



A-Scan



B-Scan

## SPECIFICATION

Code	EMU-A100	EMU-B100
Data output	USB	USB, Bluetooth
Measuring range	refer to the specification of transducers	
Resolution	0.01mm	
Accuracy	$\pm 0.04\text{mm}$ ( $H \leq 10\text{mm}$ ) $\pm (0.04 + H/1000)\text{mm}$ ( $10 \leq H < 100\text{mm}$ ) $\pm H/333\text{mm}$ ( $H \geq 100\text{mm}$ ) H is measuring thickness in mm	
Working gap (the distance between the probe and the measured object)	$\leq 1\text{mm}$	
Gain	automatic and manual gain	
Material velocity	1000~9999 m/s	
Measurement frequency	2 times/second 10 times/second fast measurement mode	
Measuring mode	auto mode, manual mode	
Display	LED, 800x268	
Storage	10000 data stored in 100 files	
Power supply	5V rechargeable lithium battery, 6 hours working time	
Operation temperature	$-10^{\circ}\text{C} \sim 350^{\circ}\text{C}$	
Dimension	180x35x34mm	
Weight	300g	

## STANDARD DELIVERY

Main unit	1 pc
Normal temperature probe	1 pc
calibration block(8mm)	1 pc
USB cable	1 pc

## OPTIONAL ACCESSORY

High temperature probe	EMU-B100-T02
------------------------	--------------

## SPECIFICATION OF PROBES

Code	Magnet	Measuring range	Diameter(Ød)	Working temperature	Applications
EMU-B100-T01 (included)	permanent magnet	1.5~150mm	Ø15mm	$-10 \sim 120^{\circ}\text{C}$	General use, mainly used for fine crystal materials, such as mild steel, aluminum
EMU-B100-T02 (optional)	permanent magnet	1.5~300mm	Ø25mm	$-10 \sim 600^{\circ}\text{C}$	High temperature environment, mainly used for ferromagnetic fine crystal materials, such as mild steel